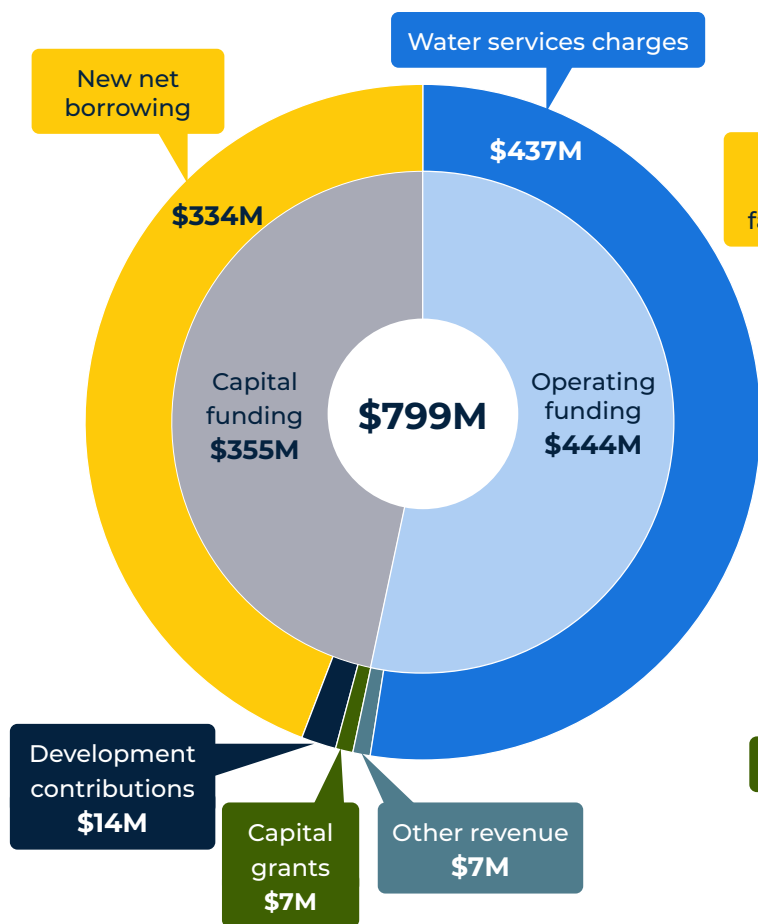
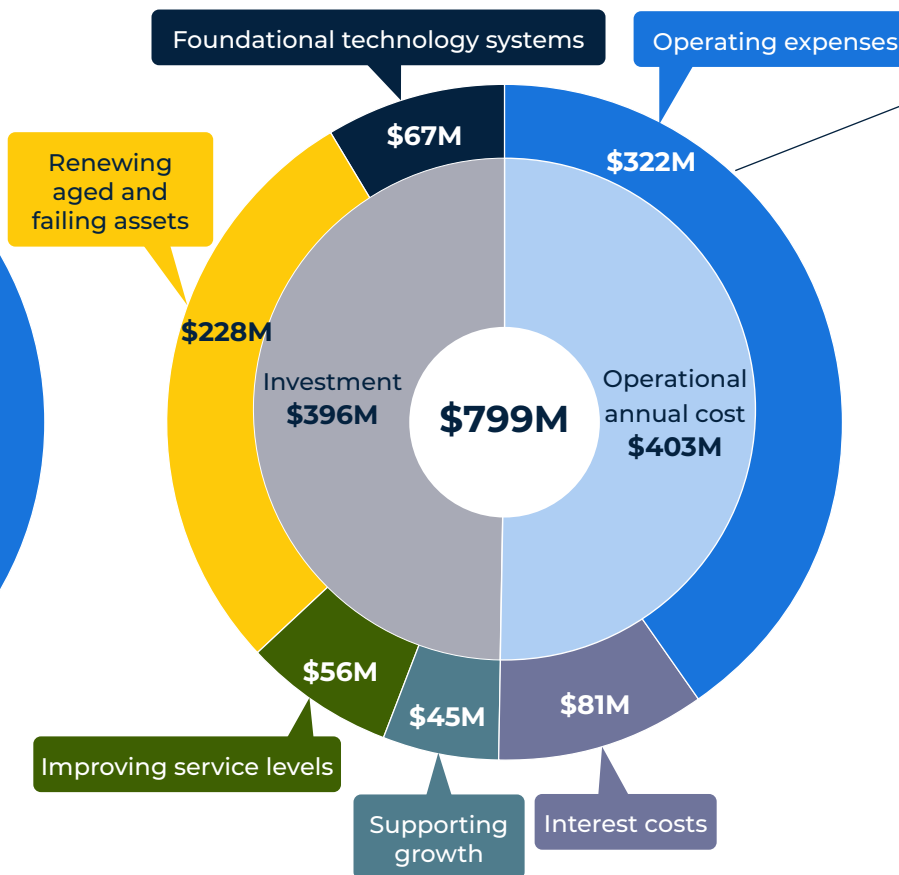


Expected funding and expenditure in 2026/27

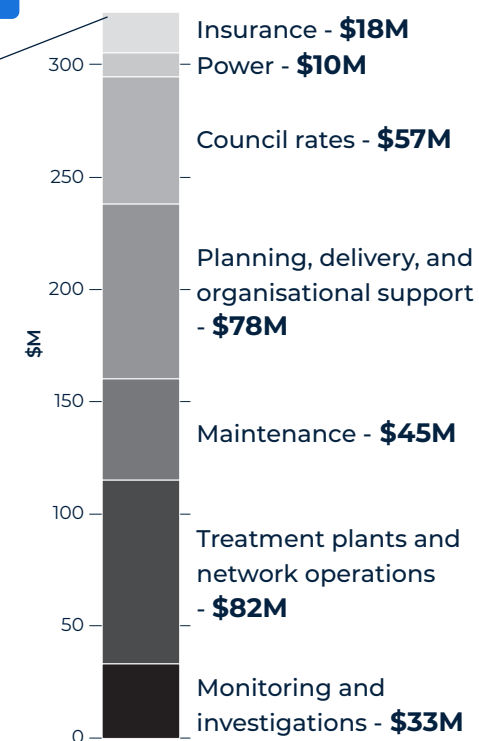
Funding sources in 2026/27



Operating expenses and investment in 2026/27



Operating expenses detail



Note this shows where funding is expected to come from in 2026/27 and how it will be used. It focuses on cash funding and spending so does not include non-cash accounting costs such as depreciation.

Note the investment figures may change as the details of the investment programme are refined.

Note that investment is allocated according to the primary outcome, but each project may contribute to more than one outcome (e.g. replacing a pipe with a larger one will support growth, replace existing assets and improve the level of service).